

Continuous Asphalt Recycling

PT 20 -120 Asphalt Recycler



Continuous Feed Mobile Recycling
Hot Mix Asphalt Production
Cold Patch Production



Recycling 100% RAP



Pavement Technologies International Corp.
1525 Western Avenue, Albany, NY 12203

518-218-7676 888-999-2660
PavementGroup.com / AsphaltRecycling.com

Giving you the freedom to produce hot mix when and where you want.



- **Mobile Millings Recycling**
- **Virgin HMA Production**
- **Cold Patch Production**

RECYCLE MILLINGS

Recycling your waste stream of RAP millings can create a tremendous income stream, putting from \$30-\$60 per ton back into your pocket. No other equipment has the potential to turn a profit as quickly as the PT 20-120.

COLD PATCH PRODUCTION

Combined with the proper liquid component, the PT 20-120 produces high performance cold patch, similar to UPM® with production rates as high as 15 tph.

HMA PRODUCTION

Blending locally available aggregates along with asphalt binder, allows for the production of performance grade, virgin hot mix asphalt.

SIMPLICITY

The PT 20-120 is built to provide simple - one man - operation, with all settings electronically controlled from the rear, curb side control panel. Dial in your settings for a continual production process.

MOBILITY

The PT 20-120 is fully mobile and can be towed with a truck between job sites.

Key Features

Large Pre-Heat Hopper & Screen: The large top mounted charging bin is fitted with a screen allowing millings to easily pass through while screening out large chunks.



The bin is large enough to hold approximately 2 yards, 3-4 tons of millings material, speeding up the RAP loading process.

Automatic Controls allow you to dial in your auger feed rate, mixer speed, additive temperature and flow rate. This allows the recycler to be set for optimal performance based upon your mix design.



Conveyor Belt unloading simplifies the process of moving mix to your dump truck and hotboxes. No need to employ a bucket loader for this job.



The folding conveyor can be raised and lowered via an electric winch and has the unique ability to fold in half, making it easy to transport your recycler from one job site to the next.

Additive Tank: From the onboard 120 gallon heated tank, asphalt rejuvenator is pumped to the mixing chamber for high quality HMA. The material temperature and flow rate can be pre-set from the main control panel allowing the process to be fully automated. An onboard flush tank makes cleanout of the plumbing a breeze.



Engineered Reliability

The PT 20-120' mobile design allows it to be easily transported to and from the job site. The trailer is equipped with two 6000 lb. axles, electric brakes, and DOT approved lighting for safe and easy transporting. Once on site it takes only a few minutes to lower the four landing gear legs to stabilize the unit for operation.



Millings are loaded into the 10 foot wide preheated hopper (charging bin) using a bucket loader. The steel screen prevents oversize pieces from entering the top load bin while acceptable size material passes directly into the load bin.



A Feed auger moves RAP millings across the hopper for delivery to the pugmill below. The auger speed is easily adjusted from the control panel. A faster feed rate is set when producing cold patch, while a slower feed rate is typically used when recycling.



Operating the recycler is a one man job, with the heating controls, feed rate, mixing speed and blending rate all operated from the rear curb side control panel. Power is provided by a diesel engine.



Once the pre-heat hopper is loaded, the burner is set to 'on' and the kettle thermostat adjusted to the desired temperature. The feed auger and pugmill mixer speeds are adjustable and can be set based upon mix design, moisture content and desired output temperature. No further steps are required to operate the recycler.



Hot mix discharges from the rear of the recycler via the conveyor. The 14' high off-load conveyor can reach a height of 126" making it easy to load your larger triaxle dump trucks with recycled hot mix or cold patch.

High-Performance Recycling

Power is supplied by a turbo-charged 44.5 hp, 4 cylinder liquid cooled diesel engine with a 60 gallon fuel tank. **The Chassis** is constructed of heavy duty rectangular tubing, with tandem 12,000Lb axles and electric brakes. Four landing gear legs stabilize the recycler while in use.



The mixing chamber is heated by 4 diesel fired burners, providing indirect heat via heat conduction through the mixing chamber walls. This prevents the flames from contacting the millings, reducing smoke emissions and maximizing the retention of essential tar oils.



ADDITIVES FOR RECYCLING

When recycling RAP materials, a modifier or rejuvenator may improve binding properties and the workability of the HMA. Several options are available.

Performance Grade Asphalts such as McAsphalt Industries's Beram Rap Rejuvenator™ is a meltable PG 58-28 asphalt delivered on pallets and conveniently packaged in plastic wrapped 25Lb blocks.

Modifiers such as Sunoco's Hydrolene™, ExxonMobil's Polybilt 101™ and Engineered Additives LLC' Astech PER™ reduce the amount of heat required to attain full compaction while greatly improving the workability of the hot mix. This is accomplished while utilizing a small quantity of additive. Customers report excellent results with some of these products.

Virgin HMA Production requires the use of PG asphalt. **Performance Grade Asphalt** is generally sold in bulk and is best sourced in your local area. Look for a PG asphalt with a high 'penetration'. This will yield HMA that is softer and easier to work with when hand raking. Work with your local liquid asphalt supplier for their recommendation.

Pelletized Asphalt is used to produce specific mix designs of HMA to meet exact DOT, airport and customer requirements. The asphalt can be stored in properly sized sacks and mixed with locally available aggregates. The pellets evenly disperse during recycling. This is an ideal product for military and rapid deployment uses and when liquid asphalt is not available.

Asphalt pellet _____
 Polymer coating _____
 Powder _____



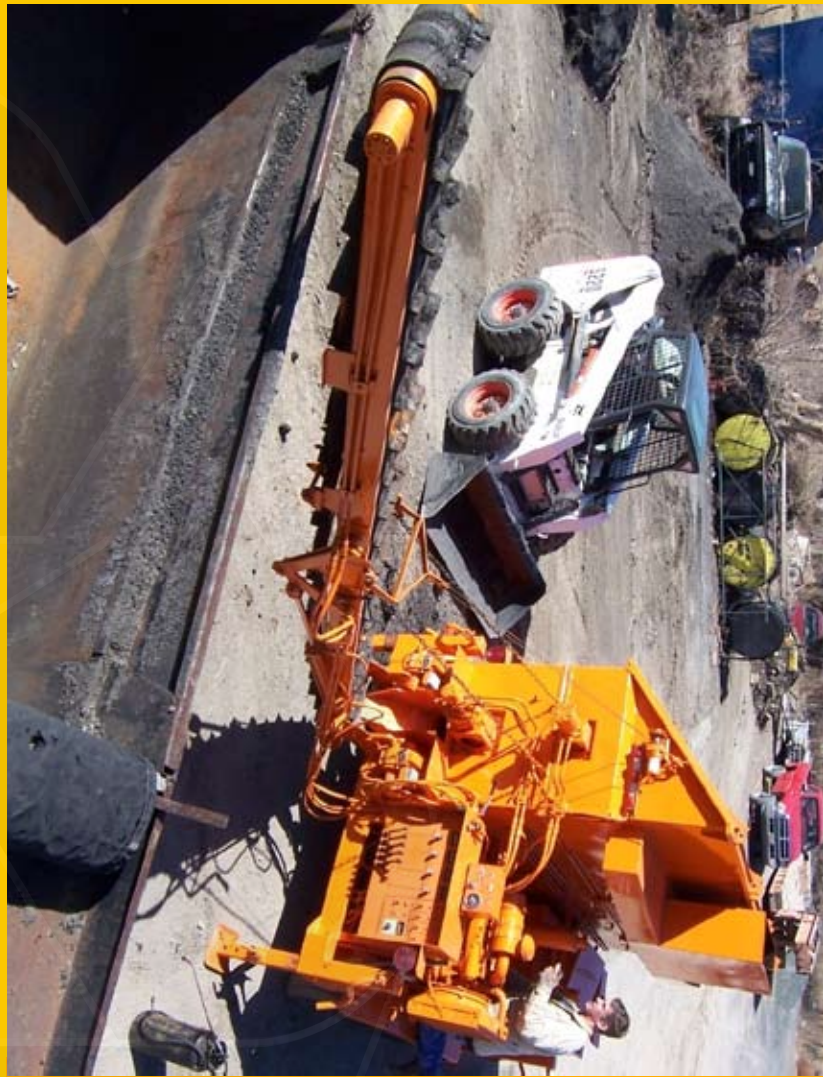
SPECIFICATIONS	
Length x Width x Height	L19'xW101"xH113" (5791mm x 2566mm x 2870mm)
Weight, Tongue Weight	12,835 lbs (5822kg), 1,260 lbs (571kg)
Hopper Capacity	2 cu yd
Hopper Opening Dimensions	124"Lx38" Wx31"H (3150mm x 965mm x 787mm)
Hopper Loading Height	82" (2082mm)
Feed Auger Dimensions	Length 116" Diameter 6" (2946mm x 152mm)
Feed Auger Construction	¼" Wear Resistant AR Steel (6.35mm)
Burner Specifications	Diesel, Forced Air
Pugmill Burners, Output BTU	4 burners, Up to 420,000 BTU each - 1,680,000 BTU Total
Insulation Type and Thickness	Cerwool, 2" thick (51mm)
Hydraulic System Type	Load Sensing
Hydraulic Reservoir Capacity	60 Gallons (227 litres)
Pugmill Chamber Liner	¼" Wear Resistant AR Steel (6.35mm)
Kettle (Tack/Additive) Capacity	120 Gallons (454 litres)
Kettle Thermostat Control Range	0 - 550°F (-18c - 288c)
Kettle Pump Drive	Hydraulic, reversible, variable speed with LCD Display
Engine Specifications	Kubota® Turbo, Diesel, 44.5hp, 4 Cyl., Liquid Cooled
Fuel Tank Capacity	60 Gallons (227 litres)
Conveyor Specifications	16" (40.6cm) wide, cleated, Belt Temp Rating 450F (232c)
Conveyor Working L, Max. Load H	178" (4521mm) Long, 126" (3200mm) High
Cleat Height, Spacing	2" (51mm) High, 9" (229mm) apart
Trailer Frame Materials	2"x6"x3/16" (51mmx152mmx4.8mm) Rectangular Tubing
Trailer Axle Rating	2 axles/ 6000 lbs. each (2721kg)
Trailer Lighting	DOT Compliant Sealed Beam, LED
Trailer Brake Type	Electric (Hydraulic Optional), all 4 wheels
Trailer Tire Size	Radial, 225/75 R15
Landing Gear Static Capacity	Four (4) / 12,000 lbs each (5443kg)
Hitch Type	3" (7.6cm) Pintle Ring adjustable 26" to 32" (66x81cm)
OPTIONS	
Compactor Carrier	Electric or Hydraulic Brakes on each axle
Tool Box 12"x12"x24"	Arrow Strip, Strobe Light 4 LED
Spare Tire Mounted	Hydraulic Tool Power Attachment
	Hydraulic Hose Reel, for hydraulic tool attachment

SPECIFICATIONS

Due to continued product development, specifications are subject to change without notice or obligation. All components as specified or equal.







Mobile Asphalt Recycling



PT 20-120

Mobile Asphalt Recycling



Pavement Technologies International Corp.
1525 Western Avenue
Albany, NY 12203 USA

1-518-218-7676
1-888-999-2660
Fax: 1-518-218-7999
PavementGroup.com
AsphaltRecycling.com

Distributed By:

